

# MODERN SAILING SCHOOL & CLUB

## Global Destinations

Is proud to Present:



**SEYCHELLES  
ISLANDS**

---

**September  
10th - 20th  
2025**

---

**BOOK NOW**

---

(415) 331-8250 | (800) 995-1668 | [modernsailing.com](http://modernsailing.com)



# Sail the Seychelles: A Nautical Adventure to Paradise



🌴🌟 **Where the Ocean Whispers Tales of Adventure** 🌟🌴

Cast off into the new turquoise waters, where they stretch endlessly and lush islands rise like emeralds from the sea.

Join **Modern Sailing School & Club** for an enchanting sailing voyage, as we chart a course through the heart of the Indian Ocean.

From **September 10–20, 2025**, under the expert guidance of **Captain Jeff Cathers**, our trip leader, and **Captain Tyler Cobbett**, one of our most experienced captains, you'll sail through the Seychelles — a sailor's dream of vibrant coral reefs, hidden coves, and ancient granite islands carved by time and tide. Pack your lightest, breeziest clothes and your most adventurous spirit. Ahead lies a journey of discovery, where a beautiful horizon awaits you with every sunrise and every sunset invites camaraderie under the stars.

For more information and to reserve your spot, contact Modern Sailing School & Club.

Call: **(415)331-8250** or

email: **globaldestinations@modernsailing.com**

Don't miss your chance to experience paradise from the deck of a sailboat!



## Reserve Your Adventure

Come join us aboard one of our expertly chosen yachts:

- **Skipped Club Boats:** Skipped by seasoned Modern Sailing US Coast Guard Licensed captains, these floating havens are a perfect blend of comfort and adventure. Reserve your cabin, solo or with a partner.
- **Bareboats:** For those who dare to take the helm, lead your crew through the wonders of the Seychelles while enjoying the safety and support of the Modern Sailing flotilla. To take the helm as a Bareboat captain ASA 114 - Catamaran Cruising or equivalent experience will be required. If you'd prefer a monohull vessel please let us know, we may be able to arrange that.

Claim your Cabin or Bareboat and set sail for a storybook adventure with Modern Sailing School & Club.

### CABIN AND BAREBOAT PRICES\*



Occupancy Type	Early Bird Pricing**	Standard Pricing
*Cabin - Single Occupancy	\$6,695	\$7,197
*Cabin - Double Occupancy	\$7,195	\$7,735
Bareboat - Moorings 4500L Exclusive	\$14,995	\$16,120
Bareboat - Moorings 5000L Exclusive	\$16,995	\$18,270

\***Cabins:** all cabins will be hosted on a Moorings Exclusive catamaran with a Lounge.

**Exclusive** class yachts are up to 1 year old and feature the latest innovations.

A **deposit of 50%** of your cabin or bareboat choice is due at time of enrollment. Remaining balance is due June 1st, 2025.

\*\***Early Bird Pricing** ends March 10th, 2024.



## WHY SAIL THE SEYCHELLES?

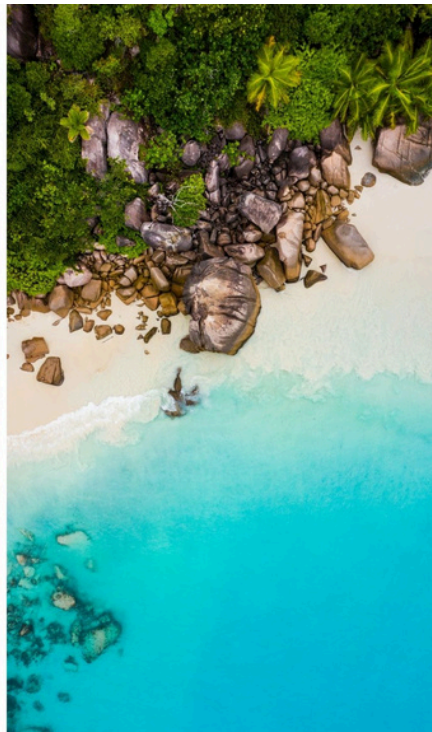
**Unparalleled Natural Beauty:** Discover secluded beaches with powder-soft sand, dramatic granite formations, and crystal-clear lagoons perfect for swimming and snorkeling. Our flotilla itinerary takes you to the most stunning locations the Seychelles have to offer.

**Incredible Wildlife Encounters:** Get up close with gentle giants like sea turtles, graceful rays, and a variety of colorful fish. The Seychelles are a biodiversity hotspot, and our flotilla provides opportunities to experience its unique wildlife firsthand.



**Ideal Sailing Conditions:** Enjoy consistent and reliable trade winds that create ideal sailing conditions. Our flotilla route is designed to maximize your time under sail, taking you to hidden anchorages and secluded bays that are only accessible by boat.

**Rich Cultural Immersion:** Experience the warmth and hospitality of the Seychellois people. Explore local markets, sample delicious Creole cuisine, and learn about the islands' fascinating history and culture. Our flotilla often includes opportunities to interact with local communities and experience authentic island life. The Seychelles offer an exceptional sailing experience, and our flotilla adventure provides the perfect way to discover its natural wonders, vibrant culture, and incredible sailing conditions.





## WHY A MODERN SAILING FLOTILLA?

**Unforgettable Global Discoveries:** Our Global Destinations program opens doors to some of the world's most spectacular cruising grounds. Explore pristine coastlines, and create lifelong memories while developing your skills as a confident and capable skipper.

**Tailored Sailing Experiences:** Choose the adventure that best suits your goals. Join a captained trip for an immersive learning experience guided by experienced skippers, or embark on a bareboat adventure within the flotilla, enjoying the freedom of independent exploration while benefiting from the support and camaraderie of the group.

**Expert Guidance & Continuous Learning:** Our experienced captains and dedicated mentor instructors provide ongoing support and guidance throughout your voyage. Learn valuable navigation skills, discover hidden anchorages and moorings, and gain a deeper understanding of the local culture and environment.

**Building a Sailing Community:** Connect with fellow sailing enthusiasts from around the world and forge lasting friendships within our supportive flotilla environment. Share experiences, learn from each other, and create unforgettable memories while exploring breathtaking destinations together.

**Empowering Your Sailing Journey:** At Modern Sailing, we provide you with the tools and support to confidently explore the world by boat. We equip you with the knowledge and resources to navigate challenges, adapt to changing conditions, and embrace the inherent learning opportunities that come with every voyage.





## Set Sail for the Seychelles: A Flotilla Adventure

Join us for an unforgettable sailing adventure in the Seychelles, a jewel of the Indian Ocean. Mooring's Charter company classifies this a Level 3 sailing destination, defined as: *"... destinations offer long spells of open water sailing, broad tidal ranges, strong winds, and remote anchorages. At least 20 days or 400 miles as skipper on an equivalent size yacht."* Which means as a bareboat skipper you'll need at least a ASA 114 or equivalent.

On our skippered boats our experienced Trip Leader will guide you through these waters, on a rewarding voyage. While some sailing experience is recommended, our US-Coast Guard and ASA-certified captains will be onboard to support all skill levels.

We'll explore secluded bays and coves, each offering unique opportunities. Swim with sea turtles, hike through lush jungles, discover hidden waterfalls, and experience the vibrant Creole culture at local markets. Enjoy snorkeling, diving, and other watersports in pristine waters.

Our itinerary includes sailing legs of varying distances, up to 25 nautical miles, providing both challenging passages and shorter, more relaxed sails. We'll sail as a flotilla, fostering camaraderie and shared experiences. Evenings will be spent enjoying sundowners and sharing stories under the stars.

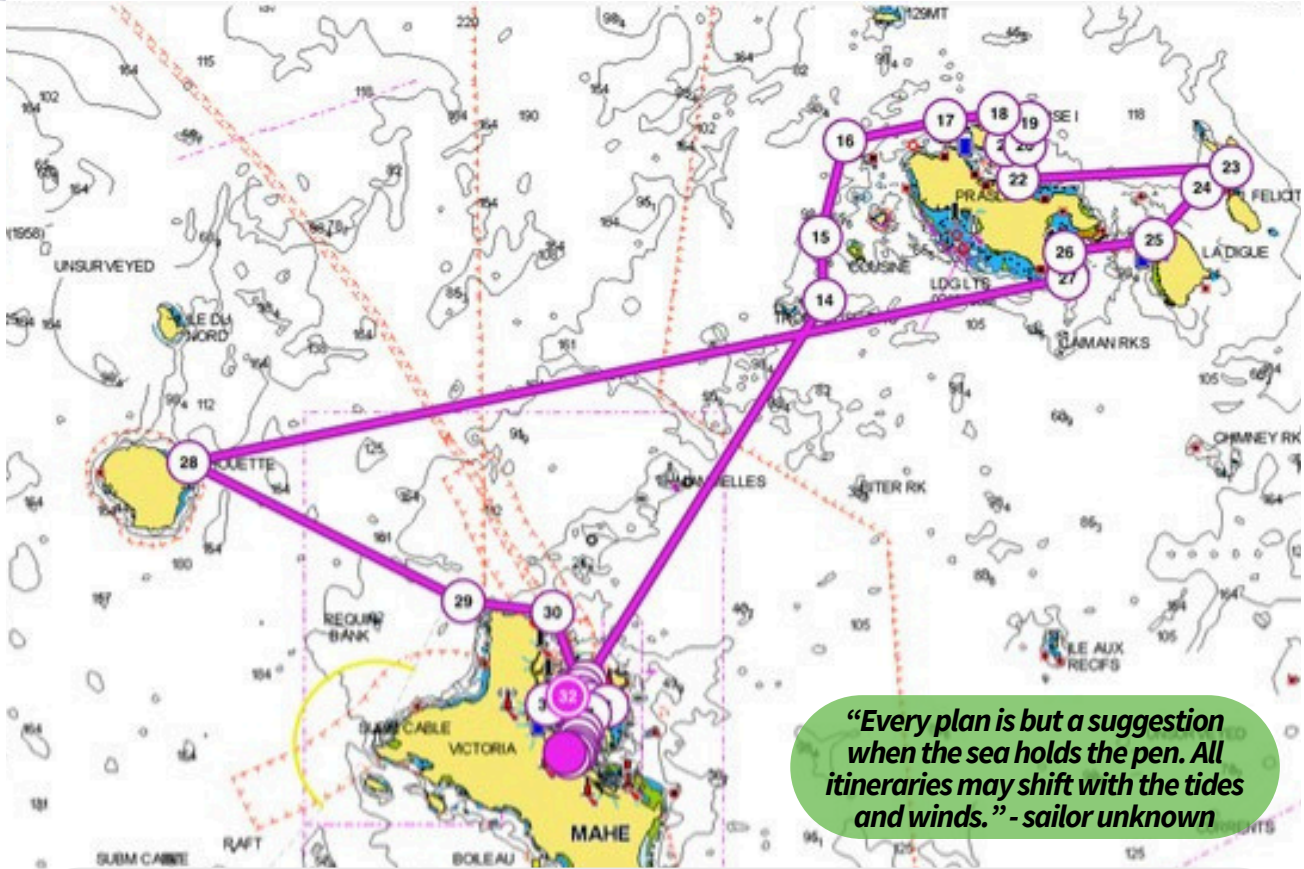
Our Trip Leader will adapt the itinerary as needed based on weather conditions and other factors, making it a more safe and enjoyable experience for all.

Prepare for an incredible journey in the Seychelles. This is more than just a sailing trip; it's an opportunity to create lasting memories and experience the magic of these islands.



# THE ITINERARY\*

The Seychelle Islands September 10-20, 2025



- Day 1 : Eden Island Marina - Anchor off west side of Ile Au Cerf ~5nm (~1h)
- Day 2: Ile Au Cerf - Sainte Anne Isle ~2nm (~.5h)
- Day 3: Sainte Anne Isle - Baie Laraie, Curieuse Island ~25nm (~6h)
- Day 4: Baie Laraie, Curieuse Island - Anse Volbert, Praslin 1.3nm (.5h)
- Day 5: Anse Volbert, Praslin - Grande Soeur 7.5nm (2h)
- Day 6 : Grande Soeur - La Passe, La Digue Island ~5nm (~1h)
- Day 7: La Passe, La Digue Island - Baie De Sainte Anne, Praslin ~ 3.2 nm (1h)
- Day 8: Baie De Sainte Anne, Praslin (Layover day)
- Day 9: Baie De Sainte Anne, Praslin - Silhouette Island ~ 32nm (6.5h)
- Day 10: Silhouette Island - Victoria, Mahe ~ 11nm (2.5h)
- Day 11: Victoria, Mahe - Eden Island Marina ~ 3nm (.5h)

\*Upon the Trip Leader's judgment, the itineraries are subject to change based on sea state, weather conditions, anchorages, and more.



**DAY 1:** Arrival at **Mahé Island** and Charter-base on Eden Island Marina; Sail to **Ile Au Cerf** (~5NM / 1h)

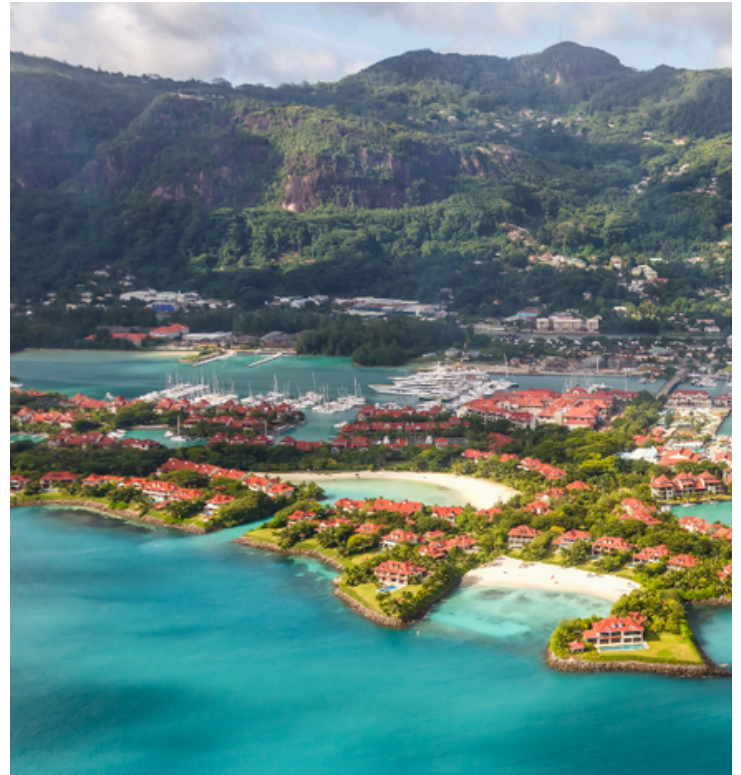
**Captains briefing** @ 9:00am  
**Vessel Boarding** @ 10:00am

Boarding, Boat Checkout and Final Provisioning.

Leaving Base approx. @ 3:00pm

**Things to do:** Welcome reception, boat briefings, provisioning, and settling into your cabin or bareboat.

**Dining Options:** Dine aboard.



**DAY 2:** Sail to **Sainte Anne Marine Park** from Ile Au Cerf (~2 NM / .5h)

St. Anne Island is the centerpiece of this beautiful marine park, and nearby Moyenne, Round, and Cerf are just as scenic. During World War II St. Anne served as a base for a contingent of Royal Marines stationed there to defend the port of Victoria in the event of an enemy attack. In the early 19th century, the area was a busy whaling port. Today, cruising in St. Anne Marine National Park is a delightful foray into the wonders of Nature, with superb snorkeling and swimming, and a number of restaurants where you can dine out and savor the local cuisine.

**Moorings:** Moorings are available for a fee on the south side of St. Anne Island. Anchoring is permitted in the park.

**Dinghy dockage:** No dinghy dockage is available.

**Things to do:** Swimming and snorkeling are the main attractions of the park. The turtles are relatively tame and will swim around you in a friendly way, providing a chance for some underwater photography. Ashore on St. Anne, Moyenne, Round, and Cerf islands are restaurants serving Creole and haute cuisine.

**Facilities:** No facilities for yachts are available.

**Dining Options:** Dine aboard.

### **St. Anne Marine National Park**

Located about 5 nautical miles off the coast of Mahé, the small islands comprising the St. Anne Marine National Park are jewels of the Seychelles archipelago. The reefs have an abundant diversity of hard and soft corals, and one of the largest expanses of sea grass in the islands. Green and hawksbill turtles are commonly seen foraging for food in this undersea prairie.





### **DAY 3 - Sail to Baie Laraie, Curieuse Island** from Sainte Anne Island (~25 NM / 6h)

Dotted with coco-de-mer palms and thick stands of mangroves, Curieuse Island is a typical example of the unparalleled beauty you'll find in the Seychelles.

In the distant past, the island was the site of a leper colony. Today, it's a cruising paradise.

**Moorings:** Moorings are available. The best anchorage in northwesterly winds is in the cove of Baie Laraie.

**Dinghy dockage:** No dinghy dockage is available.

**Things to do:** A short hike from Baie Laraie across the island to Anse José discover the island's giant tortoise sanctuary, hike across mangrove forests, hike to ruins of the leper colony, and enjoy snorkeling, swimming, and sunbathing on the beach. Taken together, all these attractions make cruising in Curieuse Island waters a memorable and inspiring adventure.

**Facilities:** No facilities for yachts are available.

**Dining Options:** Dine aboard.

#### **Curieuse Marine National Park**

From seaward the hills of Curieuse Island appear to be a blend of deep red and green, a result of the reddish-tinted soil and the lush vegetation. Stands of coco-de-mer palms grow on the island. These trees produce a double coconut as heavy as 40 pounds, some of the largest fruits in the world. Snorkeling and scuba diving is spectacular on the reefs. Two popular dive spots are Coral Garden and Pointe Rouge. The snorkeling is particularly good around the nearby islet of St. Pierre. The Doctor's House, where the island's physician lived. Built in the Creole Colonial style, the house is now a museum that highlights the history of the island.





**DAY 4 - Sail to Anse Volbert, Praslin** from Baie Laraie, Curieuse Island (~1.3NM / .5h)

Anse Volbert, also known as Côte d'Or, is a stunning beach resort on Praslin Island, offering a relaxed and luxurious atmosphere.

**Mooring:** Moorings may be available in the bay.

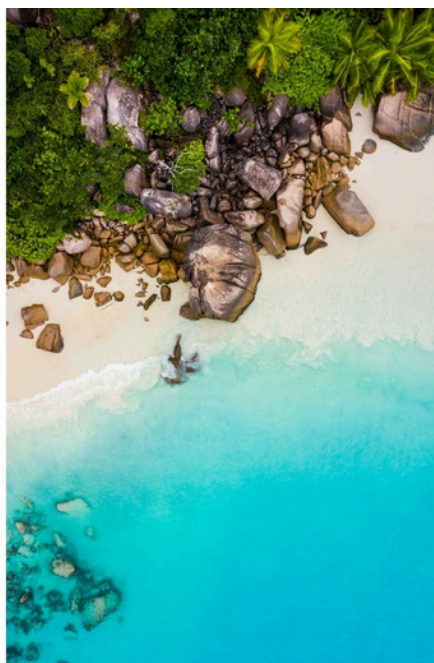
**Dinghy dockage:** Dinghy dockage may be available at resorts or marinas along the beach.

**Things to do:** Anse Volbert boasts a long stretch of pristine white sand and crystal-clear turquoise waters, perfect for swimming, sunbathing, and water sports like snorkeling, diving, and windsurfing. Explore the nearby shops and restaurants, enjoying the local cuisine and browsing for souvenirs.

**Facilities:** Anse Volbert offers a wide range of facilities, including hotels, restaurants, bars, shops, and water sports rentals.

**Dining Options:** Dine ashore options available.

**Anse Volbert**, also known as Côte d'Or, boasts a rich history tied to early settlers and coconut plantations. This picturesque beach, once a haven for local fishermen, has evolved into a thriving tourist destination with opportunities for swimming, sunbathing, snorkeling, diving, and enjoying the many restaurants and resorts.





**DAY 5- Sail to Grand Soeur Island** from Anse Volbert, Praslin (~ 7.5 NM / 2h)

Grande Soeur, or "Big Sister," is a true tropical paradise. This privately owned island boasts pristine beaches, lush vegetation, and crystal-clear waters teeming with marine life.

**Mooring:** Anchoring may be possible in designated areas, prior arrangements with the island management are typically required.

**Dinghy dockage:** No dinghy dockage is available.

**Things to do:** You can enjoy snorkeling and diving in the vibrant coral reefs, which are home to a variety of fish, sea turtles, and small reef sharks. The island also has beautiful white sand beaches where you can relax, swim, and soak up the sun.

**Facilities:** No facilities for yachts are available on the island.

**Dining Options:** Dining Aboard

**Grande Soeur,**

Privately owned and managed by the Le Château de Feuilles hotel on Praslin, was once a coconut plantation. Access is primarily granted to guests of the hotel or through pre-arranged day trips. Its pristine beaches, with soft white sand and clear waters, are some of the most beautiful in the Seychelles.



**DAY 6-** Sail to **La Passe, La Digue Island** from Grande Soeur Island (~5 NM / 1h)

La Passe is the main village and port of entry on La Digue Island, known for its laid-back atmosphere and traditional Seychellois charm.

**Moorings:** Moorings may be available in the harbor.

**Dinghy dockage:** Dinghy dockage is typically available at the jetty or designated areas within the harbor.

**Things to do:** There is much to do on La Digue Island, which is one reason why La Digue is so popular on luxury yacht charter itineraries. Horse riding, bicycle rentals, and sightseeing trips by helicopter are popular. Visit the iconic granite boulders of Anse Source d'Argent. The Tarrosa Bar, Restaurant and Disco features live music on weekends.

**Facilities:** There are a range of facilities, including guesthouses, restaurants, shops, and bike rentals.

**Dining Options:** Dine Ashore.

### **La Digue Island**

La Digue is a place with quiet charm, lush, hilly land, and the views from Belle Vue and the top of Nid Aigle are truly spectacular. Colonial-era homes line the streets, a reminder of the storied past of the island that becomes obvious when you go cruising in La Digue Island waters. Hiking trails lead into the mountains and the quiet country roads are ideal for bicycle tours. Among the attractions are the working copra mill and the Union Estate Park, a large plantation covering almost a third of the island. In addition to the estate building, which is open to the public, you'll find The Old Cemetery and a tortoise pen. A walk through Veuve Reserve takes you deep into the ecosystem of the island, and other intriguing sites.

**DAY 7 - Sail to Baie De Sainte Anne, Praslin** from Cousin Island  
(~3.2 NM / 1h)

The Praslin Marina stands out as a key destination for sailors and marine enthusiasts. This marina, located in the southeastern part of Praslin Island, offers a unique combination of essential services and a scenic environment, making it a perfect stopover for yachts and pleasure crafts.

**Mooring:** The marina is equipped with a single pontoon that can accommodate 15-20 yachts, with a depth of up to 8 meters at the pontoon and several buoys northwest of the pontoon

**Dinghy dockage:** No dinghy dockage is available. The landing fee includes a boat taxi ride to and from your yacht.

**Things to do:** Anse Baie offers a variety of activities. Visitors can explore the village, browse local shops and markets, and experience Creole culture. Dining at local restaurants provides opportunities to savor fresh seafood and regional dishes while enjoying bay views.

**Dining Options:** Local restaurant or dining on board.

**Facilities:** The marina provides essential services including water and electricity at the berths. A small grocery store is located within 100 meters of the marina, while a larger store is about a kilometer away, easily reachable by dinghy through Anse L'Amor. A morning fish market operates at the nearby police jetty.



**DAY 8 - Layover day on Praslin Island**

The third-largest granitic island in the Seychelles, offers a more secluded and pristine experience compared to the busier islands of Mahé and Praslin.

**Things to do:** A layover day on Praslin offers a chance to explore beyond the typical cruising itinerary. Visit the Vallée de Mai Nature Reserve, a UNESCO World Heritage Site, and marvel at the unique Coco de Mer palm trees. Relax on pristine beaches like Anse Lazio or Anse Georgette, renowned for their white sand and turquoise waters. Indulge in a delicious Creole lunch at a local restaurant. Consider a short hike through the lush vegetation or enjoy a leisurely bike ride along the coast.



## **DAY 9** - Sail to **Silhouette Island** from Praslin (~18 NM / 4h)

Silhouette Island, the third-largest island in the Seychelles, offers a unique blend of lush rainforests, dramatic mountains, and pristine beaches.

**Moorings:** Moorings may be available in designated areas around the island. Anchoring may be possible in suitable depths.

**Dinghy dockage:** There are no dedicated dinghy docks. Landing on the beach will be how we get ashore.

**Things to do:** Explore the island's diverse terrain, hiking through rainforests, scaling mountains, and strolling along coastal paths. Relax on the beautiful beaches, swim in the crystal-clear waters, and soak up the sun. Discover the vibrant marine life by snorkeling and diving in the surrounding waters.

**Facilities:** Numerous restaurants, bars, cafes., hotels and resorts, Water sports operators, shops and markets. Public restrooms and showers are available in some areas.

**Dining Options:** Dine ashore.

**Silhouette** offers a unique blend of natural beauty and tranquility. Its less-developed nature makes it a perfect destination for those seeking a more secluded and authentic Seychelles experience. While facilities are limited outside of the resort, the island's natural beauty and opportunities for hiking, snorkeling, and relaxation make it a worthwhile stop.





## **DAY 10** - Sail to **Victoria, Mahé** from Silhouette Island (~11 NM / 2.5h)

Arrive in Victoria, the charming capital of the Seychelles, located on the northeast coast of Mahé Island.

**Moorings:** Moorings may be available in designated areas around the island. Anchoring may be possible in suitable depths.

**Dinghy dockage:** Dinghy dockage is typically available at the marinas.

**Things to do:** In Victoria, immerse yourself in the vibrant atmosphere of the Sir Selwyn-Clarke Market, where you can find fresh produce, spices, souvenirs, and local crafts. Explore the Seychelles National Botanical Gardens, home to a diverse collection of endemic plants and trees, including the iconic Coco de Mer palm. Climb the Clock Tower for panoramic views of the city. Learn about the history and culture of the Seychelles at the National Museum of History. Savor delicious Creole cuisine and enjoy the vibrant nightlife at the many local restaurants.

**Facilities:** Numerous restaurants, bars, cafes., hotels and resorts, Water sports operators, shops and markets. Public restrooms and showers are available in some areas.

**Dining Options:** Restaurants ashore.



## **Day 11:** Sail back to base on **Eden Island** from Victoria, Mahé (~3 NM / .5h)

Depart Beau Vallon early for the short sail back to the Sunsail or Moorings base. Arrive by 10 a.m. for check-out and farewells.



## WEATHER

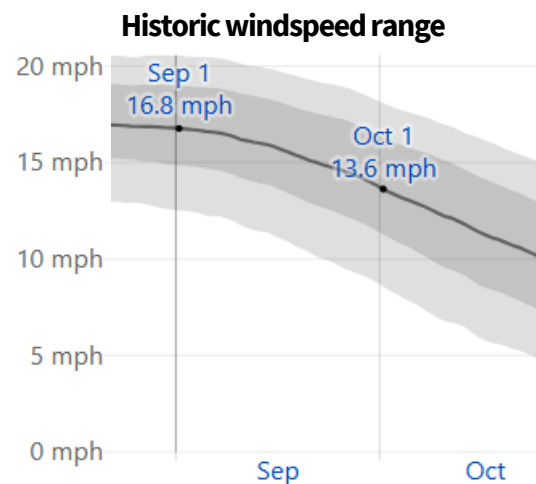
The Seychelles boasts idyllic weather year-round, making it a perfect destination for sailors. In September, temperatures typically range from a balmy **86°F during the day** to a comfortable **75°F at night**—ideal for enjoying sun-soaked days and cool, breezy evenings. Though occasional rain showers may sweep through, they are typically brief and refreshing, offering a welcome reprieve from the tropical sun.

### Wind Conditions, Currents & Tides

In September, the **southeast trade winds** begin to soften, typically blowing **at 13 to 18 knots**. While conditions are generally mild, occasional **gusts up to 25 knots** may occur. These steady winds make for excellent sailing, whether navigating between islands or testing your seamanship on longer legs.

The currents in the Seychelles are gentle, but care is needed in certain channels, where they can quicken slightly. **Tidal ranges** in the region are around **4 feet** (1.2 meters), so proper anchoring and mooring techniques are essential. If conditions become windier or tides create challenging situations, our experienced captains and trip leaders will adjust the itinerary to ensure a safe and enjoyable voyage.

September marks the transition from the southeast trade wind season to calmer weather, leaving the islands lush, green, and vibrant. You can expect plenty of sunshine with more than **12 hours of daylight** daily, perfect for maximizing your time on the water and exploring the islands. The **sea temperature is** a delightful **81°F**, inviting you to snorkel, swim, and dive into the crystal-clear waters of the Indian Ocean.



### Weather forecast

SBC, Seychelles Boarding Corporation, the public radio of Seychelles on medium wave **1368 KHz**, broadcasts a weather report in Creole between 7.30 a.m. and 8.15 a.m. The same weather bulletin is broadcast in English between **8.30 a.m. and 8.45 a.m.** Seychelles Radio can provide a forecast on request on VHF channel 16. Clearance on channel 26 or 27. The weather station on Mahé (37 33 37) issues a detailed bulletin covering the remote islands.

### Mooring, Buoying and Local Navigation

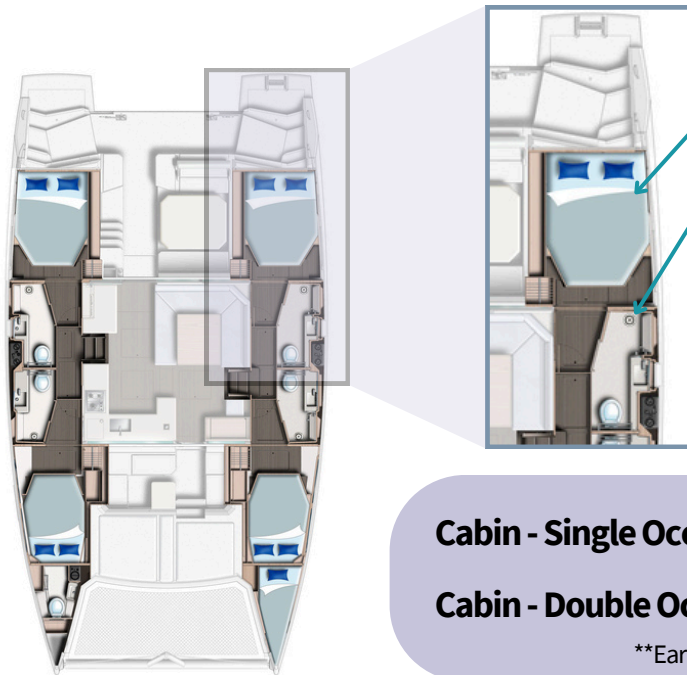
The Seychelles uses **IALA-A** system as in Europe. Red cylindrical buoys and even numbers to port; green cones with odd numbers to starboard. The channel leading to Victoria Harbor is perfectly well marked by numerous buoys. However, in the Seychelles, buoyage is poor and limited to some scattered buoys. More information will be shared during the skipper briefing.





## SKIPPERED CLUB BOATS 1 & 2 Moorings 4500L (Lounge), 4-Cabin Catamaran

The Boat and Accommodations: Winner of the 'Best Charter Boat' category in Cruising World's 2017 'Boat of the Year' competition, this innovative mid-size catamaran from renowned boat builders Robertson & Caine takes style, comfort, and performance to the next level. The new Moorings 4500 features four spacious staterooms, all with en-suite baths – and delivers the solid performance expected from this world-renowned line of catamarans, and more – for an unrivaled mid-size catamaran charter experience. The 4500 boasts an interior volume and spaciousness typically found on larger yachts. An updated, sleek exterior design featuring expansive windows also greatly impacts the interior saloon, creating panoramic views.



### Cabins:

- Queen size bed
- Private Bath for each cabin
- Air Conditioning
- Overhead roller blinders for privacy and roller bug screens
- Hanging lockers
- Recessed LED lights
- Wifi
- USB ports

**Cabin - Single Occupancy:** \$6,695\*\* / \$7,197

**Cabin - Double Occupancy:** \$7,195\*\* / \$7,735

\*\*Early Bird Pricing ends March 10th, 2025



### Galley:

- Watermaker: 117 ltr/31 Usgal per hr
- 3-burner gas hob & oven
- Vitrefrigo 2-drawer fridge/freezer 56 gal, 12v
- Safe with digital combination lock

### Deck:

- Wraparound flybridge lounge
- Beanbag chairs
- Transom shower with hot and cold water mixer
- Davit system with electric winch

### Helm/Cockpit:

- Garmin C10 forward facing Camera Raymarine Instrument Package: autopilot display, 9" display, incl. depth & wind transducer
- Fusion Marine Stereo with docking station in saloon. with Bluetooth, USB & AUX connectivity
- Generator – 9kW
- Navigation tools: Parallel rule, compass, dividers, binoculars



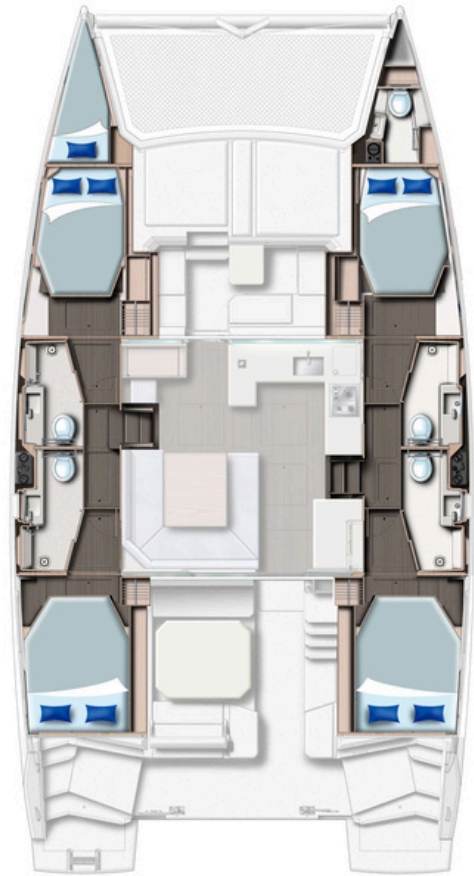


## BAREBOATS BOATS 3 & 4

### Moorings 4500L (Lounge), 4-Cabin Catamaran

The Boat and Accommodations: Winner of the 'Best Charter Boat' category in Cruising World's 2017 'Boat of the Year' competition, this innovative mid-size catamaran from renowned boat builders Robertson & Caine takes style, comfort, and performance to the next level. The new Moorings 4500 features four spacious staterooms, all with en-suite baths – and delivers the solid performance expected from this world-renowned line of catamarans, and more – for an unrivaled mid-size catamaran charter experience. The 4500 boasts an interior volume and spaciousness typically found on larger yachts. An updated, sleek exterior design featuring expansive windows also greatly impacts the interior saloon, creating panoramic views.

All the lines come back into the raised helm station, fully equipped with electric winches which help ensure that manoeuvring is trouble-free. With its pedigree as a fast and sturdy catamaran. This impression is enhanced by the choice of state-of-the-art Raymarine navigation instruments and the twin Yanmar 45 HP engines which will provide all the power you will ever need.



### GENERAL SPECIFICATIONS

Length Overall: 45ft 0in  
Waterline Length: 42ft 11in  
Beam: 24ft 2in  
Draft: 5ft 1in  
Displacement: 31967lb  
Fuel Capacity: 185gal  
Water Capacity: 206gal  
Engines:  
2 x Yanmar 45hp sail drives

### Bareboat Moorings 4500L Exclusive

Sleeps 4-9 \$14,995\*\* / \$16,120

\*\*Early Bird Pricing ends March 10th, 2025.





## BAREBOAT 5

### Moorings 5000 Club, 5-Cabin Catamaran

The Leopard 45 by Robertson & Caine, a benchmark for all 50-foot catamarans and available with The Moorings as a Moorings 5000L.

The Moorings 5000 is a modern sailing catamaran designed for comfortable cruising. It features five private guest cabins, each with its own en-suite bathroom and individually controlled air conditioning. The spacious lounge provides ample seating and a sunbed, offering excellent views. The well-equipped kitchen includes a grill and ample refrigeration. For convenience, the yacht is equipped with a water maker and electric toilets. The abundant natural light and choice of ultra-modern fittings combine to create an overall impression of luminosity and elegance.



#### Bareboat Moorings

#### 5000L Exclusive

Sleeps 5-10 \$16,995\*\* / \$18,270

\*\*Early Bird Pricing ends March 10th, 2025.





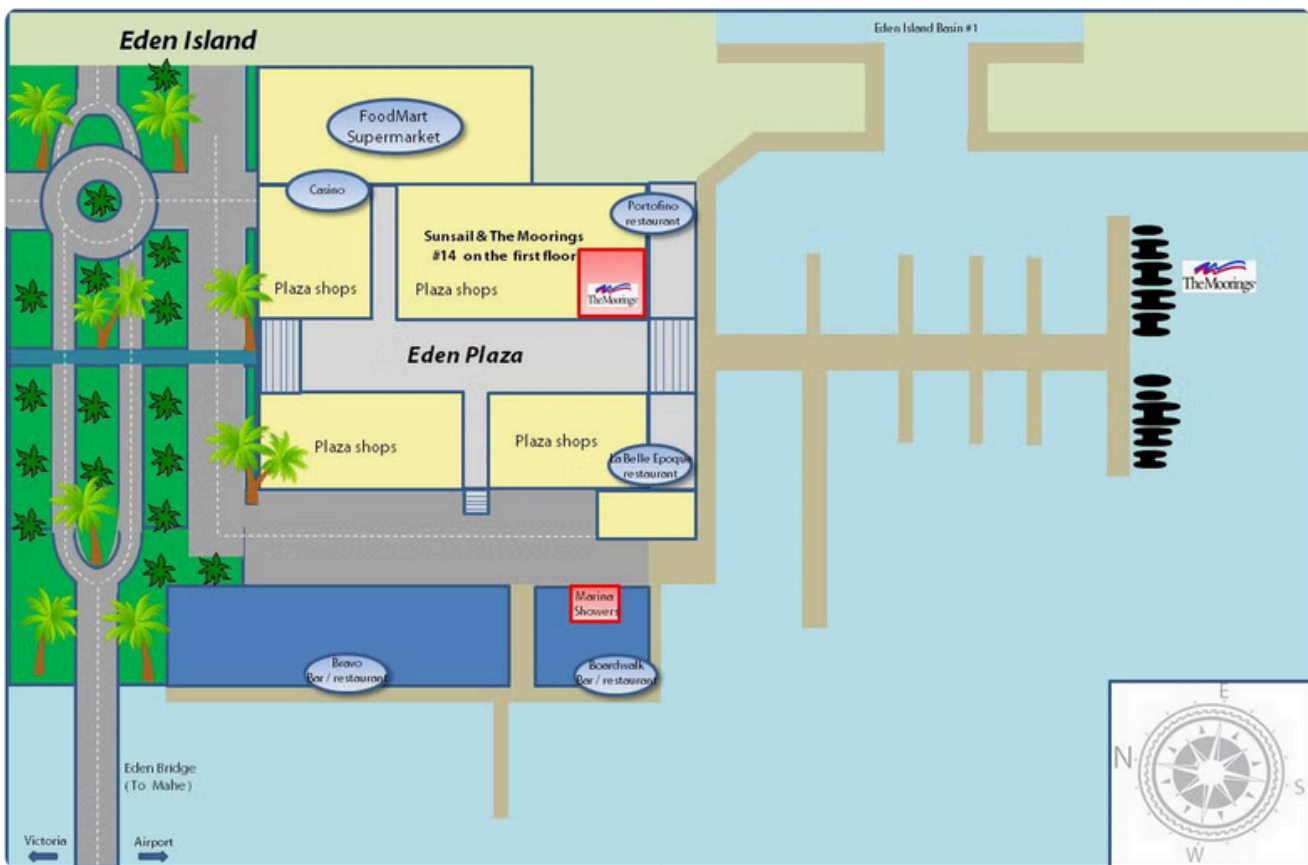
## TRAVEL ARRANGEMENTS

The flights to the Seychelles from California take at least 26h including at least one layover. You are responsible for booking your own airfare. Pricing is presently running approximately \$1300 to \$4000 per person. If you would like to use a travel agent to book your flights, we suggest Bob Entwisle at E&E Travel.

Plan on arriving early at least one day to prevent missing cast off for any travel delays. And also consider spending a few extra days at the conclusion of the voyage, there are many lodging options available around the Eden Island Marina.

### Key points:

- IATA airport code: **SEZ** (Seychelles International Airport)
- Moorings Arrival Time: **10am, September 10th 2025**
- Moorings Departure Time: 10am, September 20th 2025
- Transfers: Local taxis or pre-arranged marina shuttles await.



**Bob @ E&E Travel**  
(415) 819-5665  
bobetravels@gmail.com

**Tourist Information Center**  
Independence Avenue, Victoria – Tel: + 248 61 08 00  
Seychelles Tourism Board, Mahé



## REQUIREMENTS FOR ENTRY

- Passport
- Travel Authorization (see below)
- Sufficient funds and confirmed accommodation



## Customs

Prohibited items and those items requiring permits include:

- pharmaceuticals (see next page)
- tobacco
- alcohol
- radio equipment
- fruits or vegetables

There is no U.S. consular presence in Seychelles. Contact the **U.S. Embassy in Port Louis, Mauritius** if you need consular assistance while in Seychelles.

### **U.S. Embassy Port Louis**

4th Floor, Rogers House  
John Kennedy Street  
Port Louis, Mauritius

**Telephone: +(230) 202-4400**

Emergency After-Hours Telephone: +(230) 202-4400

Fax: +(230) 208-9534

Email: [PTLConsular@state.gov](mailto:PTLConsular@state.gov)

## Travel Authorization

The Seychelles is a visa-free country; however, **all travelers are required to apply for a Travel Authorization (TA)** prior to travelling to Seychelles. There is a fee associated with this service. The standard application fee is EUR 10.90.

You may apply up to 30 days before your flight. You may apply for a Travel Authorization by visiting <http://seychelles.govtas.com> or by downloading the Seychelles E-Border app.

To complete this immigration procedure, you must have:

- A valid passport,
- A selfie (digitized picture of yourself),
- Contact information,
- Trip information,
- An airline booking confirmation: You must upload a copy of your airline booking confirmation, which clearly shows your arrival and departure dates,
- An accommodation booking confirmation: You must upload your booking confirmation(s) for each location of your stay in the Seychelles. This must include the name of the hotel or guesthouse, the boat charter name, or the name of your employer. If you're visiting friends and family, provide a letter of invitation, and
- Credit or debit card information.

Visit the Ministry of Foreign Affairs and Tourism pages on Traveling to Seychelles for the most current entry information at: <https://mfa.gov.sc/travelling-to-seychelles/>

## Medication Import Guidelines



- **Authorization Requirement:** Individuals must obtain prior authorization from the Ministry of Health or the designated regulatory body before importing any controlled drugs, including unapproved medicines.
- **Medical Justification:** A valid prescription or medical certificate from a licensed medical practitioner is required to demonstrate the necessity of the medicine for life-saving purposes.
- **Quantity Restrictions:** The imported quantity should be limited to personal use, typically not exceeding a three-month supply, unless otherwise approved.
- **Documentation:** Comprehensive documentation must be provided, including details of the medicine, dosage, duration of treatment, and the prescribing physician's credentials.

## LOCAL STANDARDS

### Language

Creole, also called Seselwa, is the mother tongue of most Seychellois. Under the constitution, **Creole, English, and French** are recognized as national languages.

### Phone Service

Cellular phones are in widespread use on the main islands, and service is generally adequate, though there are coverage gaps in some remote areas. Local SIM cards can be purchased by tourists to use with a compatible cell phone. Check with your carrier for phone compatibility.



**Country Prefix  
+248**

**Local Emergency Number  
999**

### Conversion Rate

**\$1 US -> 14.24 SCR**

**100 SCR -> \$ 7.02 US**

as of 2/1/25

### Currency

The **Seychellois Rupee (SCR)** is the currency of the Seychelles. In some instances, tourists can pay for goods and services in U.S. dollars or other hard currency. ATMs are available at the international airport and around the major tourist destinations of Mahe, Praslin and La Digue, but they dispense only Seychellois Rupees. Credit cards are not necessarily widely accepted outside of resorts. Gas stations and smaller, more remote outlets usually only accept cash.





## WHAT TO BRING

### Passport

We will be traveling to Seychelles. **No visa is required.** Visitor permits are granted upon arrival with a return ticket, but an **electronic Travel Authorization will be required prior to entry.** Please ensure your passport is current and will not expire for at least six months after the conclusion of trip.

### Luggage

We suggest traveling light. Your gear should fit in a medium duffel bag and a small carry-on bag. Your carry-on should be less than 15 pounds. We recommend using a dry bag or backpack. Both bags should be collapsible for easy stowage on the boat in a small space. Do not bring bags with hard frames as they are difficult to stow.

### Gear

We have found that people often only use about half of what they bring. A great way to bring only what you use is to lay all your items out and reduce it by 50%. Lay them out again and then reduce again. Gear weight depends on weather conditions of course, but lightweight layering pieces made of moisture-wicking fabric that will dry quickly is essential. Your total gear weight should be less than 55lbs, including carry-on.

Sun conditions can be very different than in San Francisco Bay. Consider lightweight clothing that covers exposed areas without adding bulk or weight. There are a variety of lightweight pants, shirts, and blouses that provide UV protection. Sunscreen and hats are essential.

### What Not to Bring

Different states and countries have different travel rules, regulations, and considerations. If you have specific questions about an item, ask us. Some general items you should not bring are illegal drugs, weapons, hair dryers, expensive jewelry, pets, rigid suitcases, surfboards, golf clubs (it has happened), fireworks, and dive tanks. Linens, towels, and pillows are provided on each boat and are not necessary to bring.

### Considerations

The charter base will typically provide fins, but we encourage you to bring your own mask and snorkel. There are PFDs (life jackets) provided onboard the boat, however, you are more than welcome to bring your own. Note, you'll need to check with your airline on their rules when it comes to traveling with an inflatable PFD.









## GALLEY AND PROVISIONING

**Provisioning will be discussed at the crew meeting.** Initial menus will be made for staples. Provisioning for breakfast, lunch, and snacks will be done in advance through the charter company and are included in the cost of the trip for the club boats. We will assist bareboat skippers in planning for their charters. Additional provisioning will depend on crews' desires. Final provisioning will be completed once we arrive at the charter base in Eden Island Marina.

Victoria, five minutes by car from the Moorings office, has several full-service markets and there are a variety of small shops for provisioning needs. Supermarkets are generally open daily except Sunday, from 8:00am to 5:00pm. You can pay cash in Seychelles Rupees (SCR). Each skipper will work with participants to select items to appeal individual tastes on board. Remember that all retail goods must be shipped to the islands, so costs can be higher than you might expect.

The crew will decide on how many meals they plan on eating ashore and provision accordingly. Food and beverage costs vary based on individual crews' desires. Breakfast, lunch, snacks, and one dinner will be provisioned through Moorings on club boats. Additional meals will be decided upon and purchased as a collective by the crew, depending on tastes.

Global Destinations recognizes that people have different experiences and tastes in personal beverages (alcohol) and provisioning time will be provided for members to make their own purchases. One or two crew members are assigned to stowing the provisions.

While galley duty is a shared responsibility, those who inventory the provisions can help others to find stored items. Each boat will set up their own cooking and cleaning schedules based on crew expectations and experience.





## **GALLEY AND PROVISIONING - continued**

### **Special Dietary Needs**

The Trip Leader and skippers will consult with participants at the crew meeting regarding advanced provisioning. This is your opportunity to let them know if you have specific dietary needs or restrictions. We can plan to accommodate you. If there are unique items you desire, you will have time to purchase them during the provisioning trip.

### **Breakfast**

Breakfast will typically be between 7:00 AM to 9:00 AM each day on club boats, with flexibility based on the itinerary, group, and individual desires. We have enjoyed full course breakfasts, complete with bacon, eggs, et cetera. We have also enjoyed granola bars and fruit, depending on the crew.

The goal is to meet your needs so you will have energy to enjoy the rest of your day.

### **Lunches**

Lunches are very casual with no set schedule. They can be soup and sandwiches, salads, veggie sticks, or local fare. Lunch is often served under way and conditions may dictate what we have on a particular day. If the crew agrees, and a nice lunch spot is found, we can dinghy ashore to eat at a local restaurant or picnic on the beach.

### **Snacks**

Snacks are always a very personal thing and whatever the crew desires. Sometimes they can be chips and salsa or cheese and crackers. Fresh fruit and nuts are always good (and delicious), as they require little to no preparation and help maintain energy.

### **Dinners**

Dinners provide the most flexibility. We can choose to relax on board, cook and watch the sunset, or go ashore and sample the local culture and cuisine. When we make provisioning plans, at least one dinner meal on board needs to be included so that if we find a secluded anchorage and decide not to move, we can remain to enjoy the peace and serenity.

### **Dinner Ashore**

If we choose to go ashore in the evening, meal costs will be the responsibility of each person. Usually, most establishments will be willing to split checks. Be sure to carry some cash with you as small “mom and pop” places only accept cash.

### **Perishables**

Over the years, we have discovered that some items have a very short shelf life in the marine environment. We will try to anticipate this by acquiring the fewest possible perishables and restock enroute. Often, we come across fresh fish on the docks or at open markets. There is nothing as delicious as fresh seafood caught that very day.



## Set Sail for the Seychelles: Island Paradise Awaits (September 10-20, 2025)

Calling all adventurers! **Modern Sailing School & Club** invites you on an island-hopping flotilla through the captivating Seychelles. Explore the pristine beaches and vibrant marine life around Mahé, Praslin, and La Digue aboard our luxurious catamarans.

Choose Your Seychelles Escape:

- **Sail with Confidence:** Let our experienced captains guide you through crystal-clear waters and hidden coves in a cabin on a skippered vessel.
- **Chart Your Course:** Take the helm of your own bareboat charter with the support of our expert crew.

### CABIN AND BAREBOAT PRICES\*

Occupancy Type	Early Bird Pricing**	Standard Pricing
*Cabin - Single Occupancy	\$6,695	\$7,197
*Cabin - Double Occupancy	\$7,195	\$7,735
Bareboat - Moorings 4500L Exclusive	\$14,995	\$16,120
Bareboat - Moorings 5000L Exclusive	\$16,995	\$18,270

#### Peace of Mind:

We understand that plans can change. Review our cancellation policy for details.

#### Cancellation Policy:

- If client cancels greater than 120 days prior to September 10th, 2025 (May 13, 2025 deadline), client is responsible for a \$450 admin fee, the remaining paid balance will be refunded.
- If client cancels 119 – 90 days prior to April 2nd (June 1, 2025 deadline), client is responsible for the Deposit (50% of the cost of the desired cabin).
- If client cancels 89 days or less from April 13, 2024 (after June 1, 2025), client is responsible for 100% of trip cost.

\***Cabins:** all cabins will be hosted on a Moorings Exclusive catamaran with a Lounge.

**Exclusive** class yachts are up to 1 year old and feature the latest innovations.

A **deposit of 50%** of your cabin or bareboat choice is due at time of enrollment. Remaining balance is due June 1st, 2025.

\*\***Early Bird Pricing** ends March 10th, 2024.